



**Kent County Council**

**Proposed Admissions Arrangements for  
Academic Year 2024/25**

**Community and Voluntary Controlled  
Primary, Infant, Junior Schools in Kent**

---

---

Produced by:  
Admissions and Transport

---

---

**Contact Details**

Admissions and Transport Office  
Sessions House  
County Hall  
Maidstone  
Kent, ME14 1XQ

Tel: 03000 412121  
E-mail: [primaryadmissions@kent.gov.uk](mailto:primaryadmissions@kent.gov.uk)

## Introduction / Background

---

Each year, Kent County Council is required to determine its admissions arrangements. They must include:

- The over-subscription criteria / arrangements for entry to those schools for whom Kent County Council is the admission authority (Community and Voluntary Controlled schools).
- The Published Admission Number (PAN) for those schools
- Relevant Consultation areas

At the time of going to consultation, arrangements for the schools listed at the back of this paper identifying the Published Admissions Numbers are those schools for which Kent County Council was the admissions authority. Some schools will have been in the process of becoming academies. Where this was the case arrangements determined through Kent's consultation will transfer to the academy and if it then chooses to amend admissions arrangements in the future it will be through its own consultation on changes for future admissions years.

---

---

## Appendix C1

### **Oversubscription Criteria for Community and Voluntary**

### **Controlled Infant Junior and Primary Schools** *(except St Peters CE Primary School, Tunbury Primary School and Whitfield Aspen Primary School)*

The over-subscription criteria for all Community and Voluntary Controlled Infant, Junior and Primary schools are as follows.

Before the application of oversubscription criteria, children with an Education, Health and Care Plan which names the school will be admitted. As a result of this, the published admissions number will be reduced accordingly.

If the number of preferences for the school is more than the number of spaces available, places will be allocated in the following priority order:

- **Looked After Children and previously Looked After Children** – A looked after child is a child who is (a) in the care of a local authority, or (b) being provided with accommodation by a local authority in the exercise of their social services functions (see the definition in Section 22(1) of the Children Act 1989) at the time of making an application to a school.

A previously looked after child means such children who were adopted (or subject to child arrangements orders or special guardianship orders) immediately following having been looked after and those children who appear to the admission authority to have been in state care outside of England and ceased to be in state care as a result of being adopted.

A child is regarded as having been in state care outside of England if they were in the care of or were accommodated by a public authority, a religious organisation, or any other provider of care whose sole or main purpose is to benefit society.

- **Attendance at a linked school** – where admission links have been established between the infant and junior school concerned, children attending the infant school are given priority for admission to the junior school.
- **Current Family Association** - a brother or sister in the same school at the time of entry where the family continue to live at the same address as when the sibling was admitted – or – if they have moved – live within 2 miles of the school, or have moved to a property that is nearer to the school than the previous property as defined by the 'Nearness' criterion' (below).

If sibling priority is lost, it will not be reinstated for any reason.

Linked infant and junior schools are considered to be the same school for this criterion. If sibling priority is lost, it will not be reinstated when a child transfers from an infant school to the linked junior school or for any other reason.

Where a child is transferring from Year 2 and would not be attending the infant school from the start of the next academic year, but applied for the linked junior school, the sibling link would not be broken for a child applying for the infant school.

In this context brother or sister means children who live as brother and sister in the same house, including natural brothers or sisters, adopted siblings, stepbrothers or sisters, foster brothers or sisters.

- **Health and Special Access Reasons** – Medical, health, social and special access reasons will be applied in accordance with the school's legal obligations, in particular those under the Equality Act 2010. Priority will be given to those children whose mental or physical impairment means they have a demonstrable and significant need to attend a particular school. Equally this priority will apply to children whose parents'/guardians' physical or mental health or social needs mean that they have a demonstrable and significant need to attend a particular school. Such claims will need to be supported by written evidence from a suitably qualified medical or other practitioner who can demonstrate a special connection between these needs and the particular school.
- **Nearness of children's homes to school** - we use the distance between the child's permanent home address (defined in KCC's annual admissions prospectus) and the school, measured in a straight line using the National Land and Property Gazetteer (NLPG) address point. Distances are measured from a point defined as within the child's home to a point defined as within the school as specified by NLPG. The same address point on the school site is used for everybody. When we apply the distance criterion for an oversubscribed Community or Voluntary Controlled school, these straight line measurements are used to determine how close each applicant's address is to the school.

Where new build housing development requires a new school or the significant enlargement of an existing school the 'Nearness' criterion will allow for a catchment area (defined by a map) to be created for the relevant school. This will be included in the Statutory Public Notice and admissions determination and will be valid for a period not exceeding three rounds of admissions.

Where a child lives at more than one address, we will distance to the home at which they sleep for the majority of school nights (Sunday to Thursday) in the first academic year, using community school term dates excluding school holidays. In the unlikely event that a child spends an equal time at both addresses, KCC will use the address that is closer to the school that is named as the child's first preference.

In the event of any of the above criteria being oversubscribed, priority will be given based on distance as described above with those closest being given higher priority. In the unlikely event that two or more children in all other ways have equal eligibility for the last available place at the school, the names will be issued a number and drawn randomly to decide which child should be given the place. This will be supervised by someone independent from the school

If siblings from multiple births (twins, triplets, etc) apply for a school and the school would reach its Published Admission Number (PAN) after admitting one or more, but before admitting all of those siblings, the LA will offer a place to each of the siblings, even if doing so takes the school above its PAN. If the admissions are to Year R, and so result in a breach of infant class size legislation, the additional pupil(s) will be treated as “excepted” for the time they are in an infant class or until the numbers fall back to the current infant class size limit, as defined in the School Admissions Code.

Waiting list will be held for at least the first term of the academic year in oversubscription criteria order.

Where an offer has been made, the school will provide for the admission of all children in the September following their fourth birthday. Parents can choose to defer the date their child is admitted to the school until later in the school year, but not beyond the start of the term after their child reaches compulsory school age and not beyond the beginning of the final term of the school year. Where parents wish, children may attend part-time until later in the school year, but not beyond the start of the term after their child reaches compulsory school age.

Requests for admission to Reception outside of the normal age group should be made to the Headteacher of each preferred school as early as possible in the admissions round associated with that child’s date of birth. This will allow the school and admissions authority sufficient time to make a decision before the closing date. Parents are not expected to provide evidence to support their request to defer their application, however where provided it must be specific to the child in question. This might include medical or Educational Psychologist reports. There is no legal requirement for this medical or educational evidence to be secured from an appropriate professional, however, failure to provide this may impede a school’s ability to agree to deferral. Parents are required to complete an application for the normal point of entry at the same time, in case their request is declined. This application can be cancelled if the school agrees to accept a deferred application for entry into Year R the following year. Deferred applications must be made via paper Reception Common Application Form (RCAF) to the LA, with written confirmation from each named school attached. Deferred applications will be processed in the same way as all applications for the cohort in the following admissions round and offers will be made in accordance with each school’s oversubscription criteria. Further advice is available at [www.kent.gov.uk/primaryadmissions](http://www.kent.gov.uk/primaryadmissions)

## Oversubscription Criteria for St Peters CE Primary School

Before the application of oversubscription criteria, children with an Education, Health and Care Plan which names the school will be admitted. As a result of this, the published admissions number will be reduced accordingly.

If the number of preferences for the school is more than the number of spaces available, places will be allocated in the following priority order:

- **Looked After Children and previously Looked After Children** – A looked after child is a child who is (a) in the care of a local authority, or (b) being provided with accommodation by a local authority in the exercise of their social services functions (see the definition in Section 22(1) of the Children Act 1989) at the time of making an application to a school.

A previously looked after child means such children who were adopted (or subject to child arrangements orders or special guardianship orders) immediately following having been looked after and those children who appear to the admission authority to have been in state care outside of England and ceased to be in state care as a result of being adopted.

A child is regarded as having been in state care outside of England if they were in the care of or were accommodated by a public authority, a religious organisation, or any other provider of care whose sole or main purpose is to benefit society.

- **Current Family Association** - a brother or sister in the same school at the time of entry where the family continue to live at the same address as when the sibling was admitted – or – if they have moved – live within 2 miles of the school, or have moved to a property that is nearer to the school than the previous property as defined by the 'Nearness' criterion' (below).

If sibling priority is lost, it will not be reinstated for any reason.

In this context brother or sister means children who live as brother and sister in the same house, including natural brothers or sisters, adopted siblings, stepbrothers or sisters, foster brothers or sisters.

- **Health and Special Access Reasons** – Medical, health, social and special access reasons will be applied in accordance with the school's legal obligations, in particular those under the Equality Act 2010. Priority will be given to those children whose mental or physical impairment means they have a demonstrable

and significant need to attend a particular school. Equally this priority will apply to children whose parents'/guardians' physical or mental health or social needs mean that they have a demonstrable and significant need to attend a particular school. Such claims will need to be supported by written evidence from a suitably qualified medical or other practitioner who can demonstrate a special connection between these needs and the particular school.

- **Children who live in the Unparished area of Tunbridge Wells** – Children will be ranked according to the distance from their home to St Peters CE Primary School with those living closest being ranked highest. The distance is measured between the child's permanent address and the school in a straight line using the National Land and Property Gazetteer (NLPG) address point data. Distances are measured from a point defined as within the child's home to a point defined as within the school as specified by NLPG. The same address point on the school site is used for everybody. A map displaying the priority area is provided below.
- **Nearness of children's homes to school** - we use the distance between the child's permanent home address (defined in KCC's annual admissions prospectus) and the school, measured in a straight line using the National Land and Property Gazetteer (NLPG) address point. Distances are measured from a point defined as within the child's home to a point defined as within the school as specified by NLPG. The same address point on the school site is used for everybody. When we apply the distance criterion for an oversubscribed Community or Voluntary Controlled school, these straight line measurements are used to determine how close each applicant's address is to the school.

Where new build housing development requires a new school or the significant enlargement of an existing school the 'Nearness' criterion will allow for a catchment area (defined by a map) to be created for the relevant school. This will be included in the Statutory Public Notice and admissions determination and will be valid for a period not exceeding three rounds of admissions.

Where a child lives at more than one address, we will distance to the home at which they sleep for the majority of school nights (Sunday to Thursday) in the first academic year, using community school term dates excluding school holidays. In the unlikely event that a child spends an equal time at both addresses, KCC will use the address that is closer to the school that is named as the child's first preference.

In the event of any of the above criteria being oversubscribed, priority will be given based on distance as described above with those closest being given higher priority. In the unlikely event that two or more children in all other ways have equal eligibility for the last available place at the school, the names will be issued a number and drawn randomly to decide which child should be given the place. This will be supervised by someone independent from the school.

If siblings from multiple births (twins, triplets, etc) apply for a school and the school would reach its Published Admission Number (PAN) after admitting one or more, but before admitting all of those siblings, the LA will offer a place to each of the siblings, even if doing so takes the school above its PAN. If the admissions are to Year R, and so result in

a breach of infant class size legislation, the additional pupil(s) will be treated as “excepted” for the time they are in an infant class or until the numbers fall back to the current infant class size limit, as defined in the School Admissions Code.

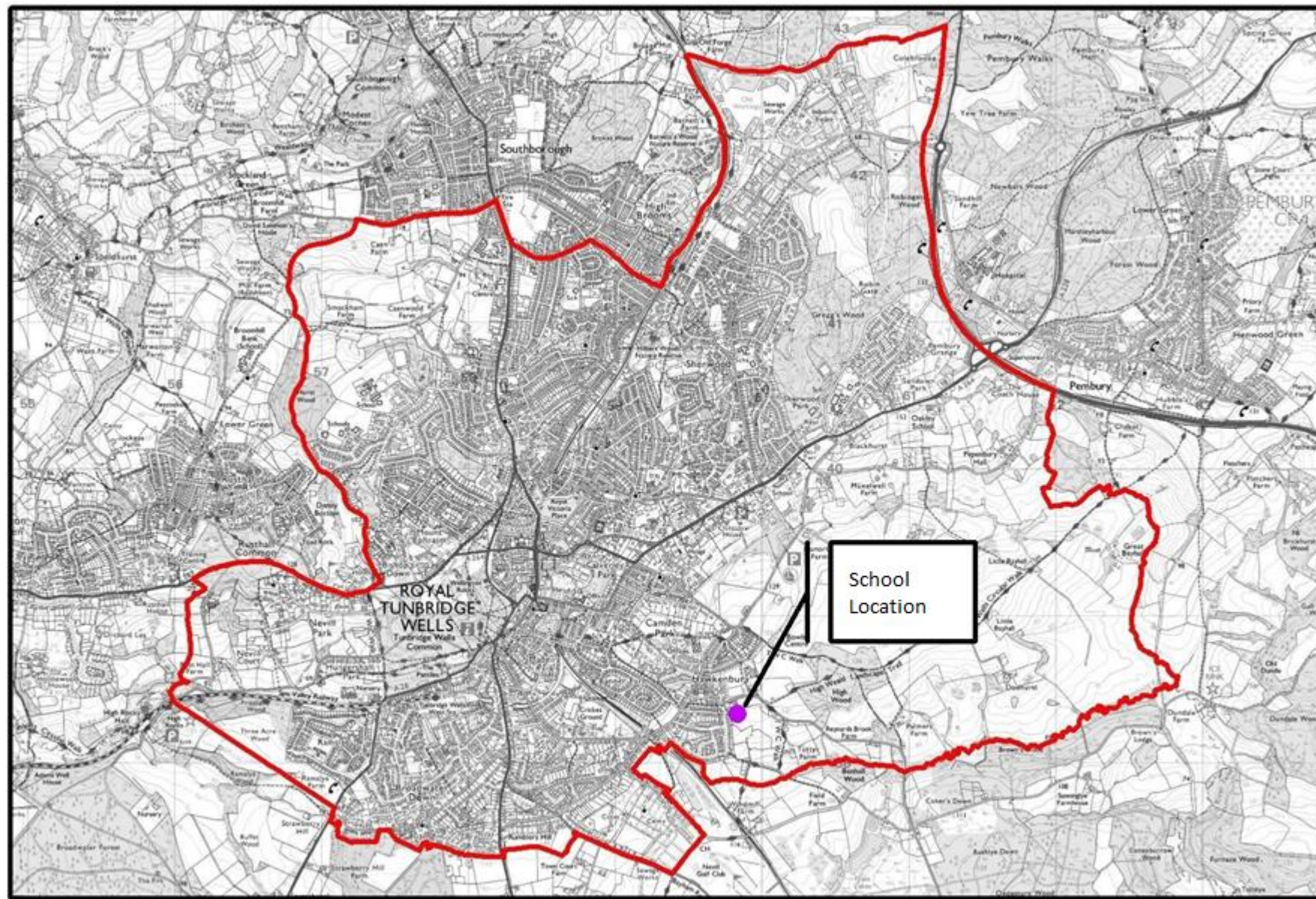
Waiting list will be held for at least the first term of the academic year in oversubscription criteria order.

Where an offer has been made, the school will provide for the admission of all children in the September following their fourth birthday. Parents can choose to defer the date their child is admitted to the school until later in the school year, but not beyond the start of the term after their child reaches compulsory school age and not beyond the beginning of the final term of the school year. Where parents wish, children may attend part-time until later in the school year, but not beyond the start of the term after their child reaches compulsory school age.

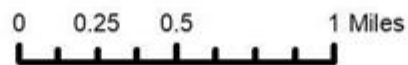
Requests for admission to Reception outside of the normal age group should be made to the Headteacher of each preferred school as early as possible in the admissions round associated with that child’s date of birth. This will allow the school and admissions authority sufficient time to make a decision before the closing date. Parents are not expected to provide evidence to support their request to defer their application, however where provided it must be specific to the child in question. This might include medical or Educational Psychologist reports. There is no legal requirement for this medical or educational evidence to be secured from an appropriate professional, however, failure to provide this may impede a school’s ability to agree to deferral. Parents are required to complete an application for the normal point of entry at the same time, in case their request is declined. This application can be cancelled if the school agrees to accept a deferred application for entry into Year R the following year. Deferred applications must be made via paper Reception Common Application Form (RCAF) to the LA, with written confirmation from each named school attached. Deferred applications will be processed in the same way as all applications for the cohort in the following admissions round and offers will be made in accordance with each school’s oversubscription criteria. Further advice is available at [www.kent.gov.uk/primaryadmissions](http://www.kent.gov.uk/primaryadmissions)



# St Peter's Primary and Unparished Tunbridge Wells



This map is reproduced from Ordnance Survey material with the permission of Ordnance Survey on behalf of the Controller of Her Majesty's Stationery Office © Crown Copyright and database right 2017. Unauthorised reproduction infringes Crown copyright and may lead to prosecution or civil proceedings. 100019238



## Oversubscription Criteria for Tunbury Primary School

Before the application of oversubscription criteria, children with an Education, Health and Care Plan which names the school will be admitted. As a result of this, the published admissions number will be reduced accordingly.

If the number of preferences for the school is more than the number of spaces available, places will be allocated in the following priority order:

- **Looked After Children and previously Looked After Children** – A looked after child is a child who is (a) in the care of a local authority, or (b) being provided with accommodation by a local authority in the exercise of their social services functions (see the definition in Section 22(1) of the Children Act 1989) at the time of making an application to a school.

A previously looked after child means such children who were adopted (or subject to child arrangements orders or special guardianship orders) immediately following having been looked after and those children who appear to the admission authority to have been in state care outside of England and ceased to be in state care as a result of being adopted.

A child is regarded as having been in state care outside of England if they were in the care of or were accommodated by a public authority, a religious organisation, or any other provider of care whose sole or main purpose is to benefit society.

- **Current Family Association** - a brother or sister in the same school at the time of entry where the family continue to live at the same address as when the sibling was admitted – or – if they have moved – live within 2 miles of the school, or have moved to a property that is nearer to the school than the previous property as defined by the 'Nearness' criterion' (below).

If sibling priority is lost, it will not be reinstated for any reason.

In this context brother or sister means children who live as brother and sister in the same house, including natural brothers or sisters, adopted siblings, stepbrothers or sisters, foster brothers or sisters.

- **Children who live within a 0.5 mile radius of the school** - Children will be ranked according to the distance from their home to Tunbury Primary School with those living closest being ranked highest. The distance is measured between the child's permanent address and the school in a straight line using the National Land and Property Gazetteer (NLPG) address point data. Distances are measured from a point defined as within the child's home to a point defined as within the school as specified by NLPG. The same address point on the school site is used for everybody. A map displaying the priority area is provided below.

- **Children who live in the Parish of Aylesford or Boxley and who are also within a 1.5 mile radius of the school** – Children will be ranked according to the distance from their home to Tunbury Primary School with those living closest being ranked highest. The distance is measured between the child's permanent address and the school in a straight line using the National Land and Property Gazetteer (NLPG) address point data. Distances are measured from a point defined as within the child's home to a point defined as within the school as specified by NLPG. The same address point on the school site is used for everybody. A map displaying the priority area is provided below.
- **Health and Special Access Reasons** – Medical, health, social and special access reasons will be applied in accordance with the school's legal obligations, in particular those under the Equality Act 2010. Priority will be given to those children whose mental or physical impairment means they have a demonstrable and significant need to attend a particular school. Equally this priority will apply to children whose parents'/guardians' physical or mental health or social needs mean that they have a demonstrable and significant need to attend a particular school. Such claims will need to be supported by written evidence from a suitably qualified medical or other practitioner who can demonstrate a special connection between these needs and the particular school.
- **Nearness of children's homes to school** - we use the distance between the child's permanent home address (defined in KCC's annual admissions prospectus) and the school, measured in a straight line using the National Land and Property Gazetteer (NLPG) address point data. Distances are measured from a point defined as within the child's home to a point defined as within the school as specified by NLPG. The same address point on the school site is used for everybody.  
When we apply the distance criterion for an oversubscribed Community or Voluntary Controlled school, these straight line measurements are used to determine how close each applicant's address is to the school.

In the event of any of the above criteria being oversubscribed, priority will be given based on distance as described above with those closest being given higher priority. In the unlikely event that two or more children in all other ways have equal eligibility for the last available place at the school, the names will be issued a number and drawn randomly to decide which child should be given the place. This will be supervised by someone independent from the school.

Where a child lives at more than one address, we will distance to the home at which they sleep for the majority of school nights (Sunday to Thursday) in the first academic year, using community school term dates excluding school holidays. In the unlikely event that a child spends an equal time at both addresses, KCC will use the address that is closer to the school that is named as the child's first preference.

If siblings from multiple births (twins, triplets, etc) apply for a school and the school would reach its Published Admission Number (PAN) after admitting one or more, but before admitting all of those siblings, the LA will offer a place to each of the siblings, even if doing so takes the school above its PAN. If the admissions are to Year R, and so result in a breach of infant class size legislation, the additional pupil(s) will be treated as “excepted” for the time they are in an infant class or until the numbers fall back to the current infant class size limit, as defined in the School Admissions Code.

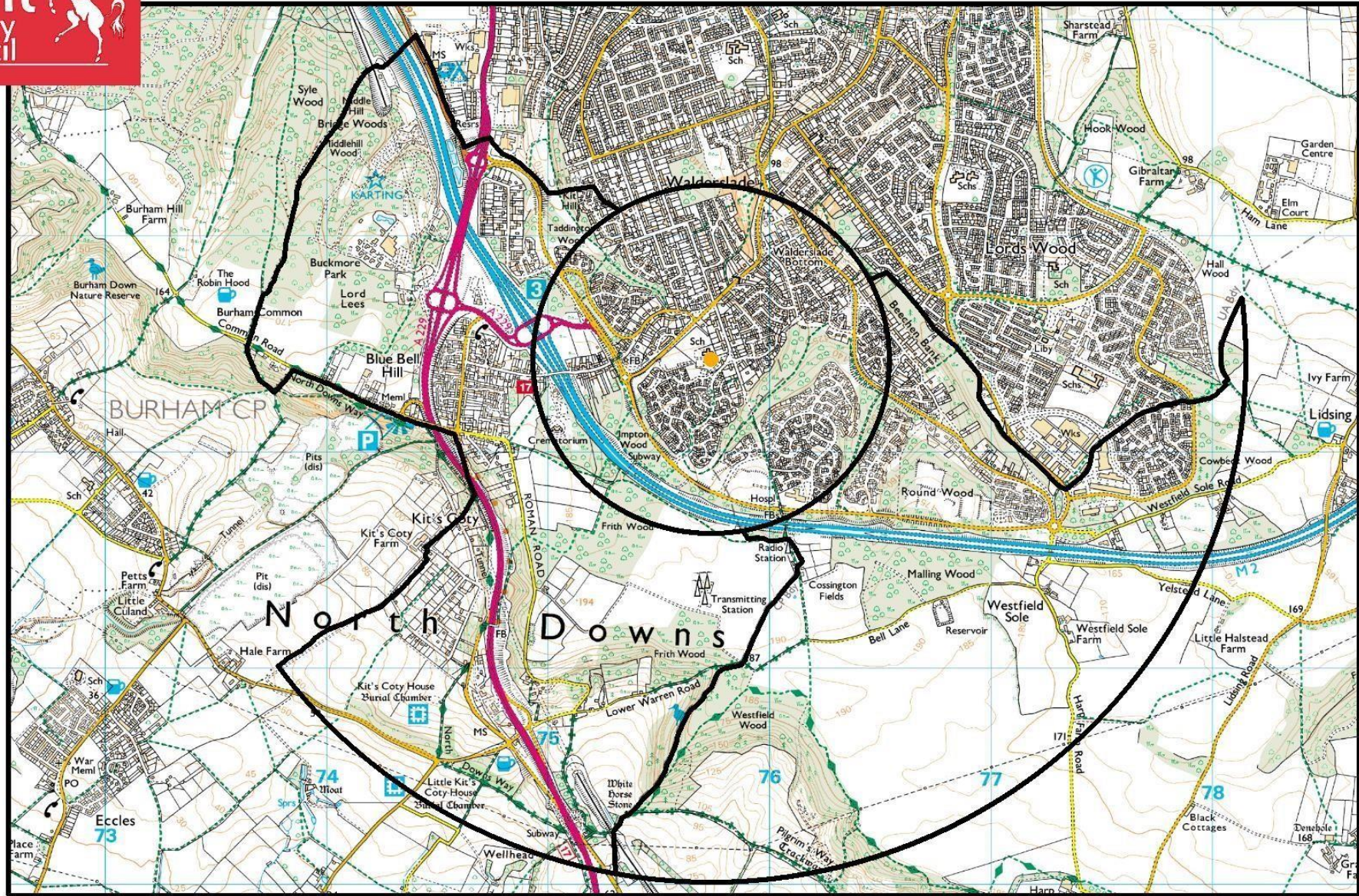
Waiting list will be held for at least the first term of the academic year in oversubscription criteria order.

Where an offer has been made, the school will provide for the admission of all children in the September following their fourth birthday. Parents can choose to defer the date their child is admitted to the school until later in the school year, but not beyond the start of the term after their child reaches compulsory school age and not beyond the beginning of the final term of the school year. Where parents wish, children may attend part-time until later in the school year, but not beyond the start of the term after their child reaches compulsory school age.

Requests for admission to Reception outside of the normal age group should be made to the Headteacher of each preferred school as early as possible in the admissions round associated with that child’s date of birth. This will allow the school and admissions authority sufficient time to make a decision before the closing date. Parents are not expected to provide evidence to support their request to defer their application, however where provided it must be specific to the child in question. This might include medical or Educational Psychologist reports. There is no legal requirement for this medical or educational evidence to be secured from an appropriate professional, however, failure to provide this may impede a school’s ability to agree to deferral. Parents are required to complete an application for the normal point of entry at the same time, in case their request is declined. This application can be cancelled if the school agrees to accept a deferred application for entry into Year R the following year. Deferred applications must be made via paper Reception Common Application Form (RCAF) to the LA, with written confirmation from each named school attached. Deferred applications will be processed in the same way as all applications for the cohort in the following admissions round and offers will be made in accordance with each school’s oversubscription criteria. Further advice is available at [www.kent.gov.uk/primaryadmissions](http://www.kent.gov.uk/primaryadmissions)



# Tunbury Primary, half mile zone and 1.5 mile (Boxley & Aylesford only)



0 0.2 0.4 0.8 Miles



Produced by: Admissions and Transport  
Dated

This map is reproduced from Ordnance Survey material with the permission of Ordnance Survey on behalf of the Controller of Her Majesty's Stationery Office © Crown Copyright and database right 2011.  
Unauthorised reproduction infringes Crown copyright and may lead to prosecution or civil proceedings. 100019238

K:\A&T\System's team\maps\Transport

## Oversubscription Criteria for Whitfield Aspen Primary School

Before the application of oversubscription criteria, children with an Education, Health and Care Plan which names the school will be admitted. As a result of this, the published admissions number will be reduced accordingly.

If the number of preferences for the school is more than the number of spaces available, places will be allocated in the following priority order:

- **Looked After Children and previously Looked After Children** – A looked after child is a child who is (a) in the care of a local authority, or (b) being provided with accommodation by a local authority in the exercise of their social services functions (see the definition in Section 22(1) of the Children Act 1989) at the time of making an application to a school.

A previously looked after child means such children who were adopted (or subject to child arrangements orders or special guardianship orders) immediately following having been looked after and those children who appear to the admission authority to have been in state care outside of England and ceased to be in state care as a result of being adopted.

A child is regarded as having been in state care outside of England if they were in the care of or were accommodated by a public authority, a religious organisation, or any other provider of care whose sole or main purpose is to benefit society.

- **Current Family Association** - a brother or sister in the same school at the time of entry where the family continue to live at the same address as when the sibling was admitted – or – if they have moved – live within 2 miles of the school, or have moved to a property that is nearer to the school than the previous property as defined by the 'Nearness' criterion' (below).

If sibling priority is lost, it will not be reinstated for any reason.

In this context brother or sister means children who live as brother and sister in the same house, including natural brothers or sisters, adopted siblings, stepbrothers or sisters, foster brothers or sisters.

- **Health and Special Access Reasons** – Medical, health, social and special access reasons will be applied in accordance with the school's legal obligations, in particular those under the Equality Act 2010. Priority will be given to those children whose mental or physical impairment means they have a demonstrable and significant need to attend a particular school. Equally this priority will apply to children whose parents'/guardians' physical or mental health or social needs mean that they have a demonstrable and significant need to attend a particular school. Such claims will need to be supported by written evidence from a suitably qualified medical or other practitioner who can demonstrate a special connection between these needs and the particular school.
- **Nearness of children's homes to school** - Children will be ranked according to the distance from their home (defined in KCC's annual admissions prospectus) to the nearest of either the Mayfield Road site or the Archers Court Road site of Whitfield Aspen school, with those living closest being ranked highest. The distance

is measured between the child's permanent address and the school in a straight line using the National Land and Property Gazetteer (NLPG) address point data. Distances are measured from a point

defined as within the child's home to a point defined as within the school as specified by NLPG. The same address point on the school site is used for everybody.

In the event of any of the above criteria being oversubscribed, priority will be given based on distance as described above with those closest being given higher priority. In the unlikely event that two or more children in all other ways have equal eligibility for the last available place at the school, the names will be issued a number and drawn randomly to decide which child should be given the place. This will be supervised by someone independent from the school.

Where a child lives at more than one address, we will distance to the home at which they sleep for the majority of school nights (Sunday to Thursday) in the first academic year, using community school term dates excluding school holidays. In the unlikely event that a child spends an equal time at both addresses, KCC will use the address that is closer to the school that is named as the child's first preference.

If siblings from multiple births (twins, triplets, etc) apply for a school and the school would reach its Published Admission Number (PAN) after admitting one or more, but before admitting all of those siblings, the LA will offer a place to each of the siblings, even if doing so takes the school above its PAN. If the admissions are to Year R, and so result in a breach of infant class size legislation, the additional pupil(s) will be treated as "excepted" for the time they are in an infant class or until the numbers fall back to the current infant class size limit, as defined in the School Admissions Code.

Waiting list will be held for at least the first term of the academic year in oversubscription criteria order.

Where an offer has been made, the school will provide for the admission of all children in the September following their fourth birthday. Parents can choose to defer the date their child is admitted to the school until later in the school year, but not beyond the start of the term after their child reaches compulsory school age and not beyond the beginning of the final term of the school year. Where parents wish, children may attend part-time until later in the school year, but not beyond the start of the term after their child reaches compulsory school age.

Requests for admission to Reception outside of the normal age group should be made to the Headteacher of each preferred school as early as possible in the admissions round associated with that child's date of birth. This will allow the school and admissions authority sufficient time to make a decision before the closing date. Parents are not expected to provide evidence to support their request to defer their application, however where provided it must be specific to the child in question. This might include medical or Educational Psychologist reports. There is no legal requirement for this medical or educational evidence to be secured from an appropriate professional, however, failure to provide this may impede a school's ability to agree to deferral. Parents are required to complete an application for the normal point of entry at the same time, in case their request is declined. This application can be cancelled if the school agrees to accept a

deferred application for entry into Year R the following year. Deferred applications must be made via paper Reception Common Application Form (RCAF) to the LA, with written confirmation from each named school attached. Deferred applications will be processed in the same way as all applications for the cohort in the following admissions round and offers will be made in accordance with each school's oversubscription criteria. Further advice is available at [www.kent.gov.uk/primaryadmissions](http://www.kent.gov.uk/primaryadmissions)



## Linked Infant and Junior Schools

DFE NO	Infant School Name	Linked With	DFE NO	Junior School Name
2514	Brookfield Infant School	Linked With	5223	Brookfield Junior School
2329	Callis Grange Nursery and Infant School	Linked With	3360	St Peter-in-Thanel Church of England Junior School*
2574	Downs View Infant School	Linked With	2052	Kennington Church of England Junior School*
2263	Herne Bay Infant School	<u>Linked With</u>	5206	Herne Bay Junior School *
3295	Herne CE Infant & Nursery School	Linked With	3338	Herne CE (Aided) Junior School *
2459	Riverhead Infant School	Linked With	2141	Amherst School (Academy) Trust *
2626	Sandwich Infant School *	Linked With	2627	Sandwich Junior School
2337	St Crispin's Community Infant School	Linked With	3181	St Saviour's Church of England Junior School
3073	St Michael's Church of England Infant School	<u>Linked With</u>	3072	St Michael's Church of England Junior School
2474	St Paul's Infant School	<u>Linked With</u>	2175	North Borough Junior School
3081	Thurnham Church of England Infant School	Linked With	5203	Roseacre Junior School*
2276	Willesborough Infant School	<u>Linked With</u>	5226	Willesborough Junior School *

\* Own admission authority Schools

**Appendix C2**  
**Published Admission Numbers for Community and Voluntary Controlled**  
**Infant, Junior and Primary Schools in Kent:**

<b>DfE no.</b>	<b>School name</b>	<b>District</b>	<b>Sub Type</b>	<b>Status</b>	<b>PAN</b>
3909	Ashford Oaks Community Primary School	Ashford	Primary	Community	60
2278	Bethersden Primary School	Ashford	Primary	Community	20
3136	Brabourne CEP School	Ashford	Primary	Voluntary Controlled	15
2574	Downs View Infant School	Ashford	Infant	Community	90
3199	Egerton CEP School	Ashford	Primary	Voluntary Controlled	30
2282	Great Chart Primary School	Ashford	Primary	Community	60
3139	High Halden CEP School	Ashford	Primary	Voluntary Controlled	15
3134	John Mayne CEP School	Ashford	Primary	Voluntary Controlled	20
3284	Lady Joanna Thornhill (Endowed) Primary School	Ashford	Primary	Voluntary Controlled	60
3138	St. Mary's CEP School, Chilham	Ashford	Primary	Voluntary Controlled	15
2275	Victoria Road Primary School	Ashford	Primary	Community	30
3145	Woodchurch CEP School	Ashford	Primary	Voluntary Controlled	26
3120	Barham CEP School	Canterbury	Primary	Voluntary Controlled	30
2258	Blean Primary School	Canterbury	Primary	Community	60
3122	Bridge & Patribourne CEP School	Canterbury	Primary	Voluntary Controlled	60
3123	Chislet CEP School	Canterbury	Primary	Voluntary Controlled	14
2263	Herne Bay Infant School	Canterbury	Infant	Community	<b>90</b>
3295	Herne CEI School	Canterbury	Infant	Voluntary Controlled	90
2265	Hoath Primary School	Canterbury	Primary	Community	15
3126	Littlebourne CEP School	Canterbury	Primary	Voluntary Controlled	15
2000	St John's CofE Primary School	Canterbury	Primary	Voluntary Controlled	60
3129	St. Alphege CEI School	Canterbury	Infant	Voluntary Controlled	60
3289	St. Peter's Methodist Primary School, Canterbury	Canterbury	Primary	Voluntary Controlled	30
2268	Westmeads Community Infant School	Canterbury	Infant	Community	60
3130	Wickhambreaux CEP School	Canterbury	Primary	Voluntary Controlled	15
2120	Bean Primary School	Dartford	Primary	Community	30
2689	Craylands School, The	Dartford	Primary	Community	60
3296	Langafel CEP School	Dartford	Primary	Voluntary Controlled	45
2066	Maypole Primary School	Dartford	Primary	Community	60
2454	Aycliffe Community Primary School	Dover	Primary	Community	20
2648	Aylesham Primary School	Dover	Primary	Community	60
2559	Capel-le-Ferne Primary School	Dover	Primary	Community	30
3167	Eastry CEP School	Dover	Primary	Voluntary Controlled	30

2320	Eythorne Elvington Community Primary School	Dover	Primary	Community	20
3168	Goodnestone CEP School	Dover	Primary	Voluntary Controlled	10
3916	Green Park Community Primary School	Dover	Primary	Community	60
3169	Guston CEP School	Dover	Primary	Voluntary Controlled	22
2318	Langdon Primary School	Dover	Primary	Community	15
2321	Lydden Primary School	Dover	Primary	Community	12
3171	Nonington CEP School	Dover	Primary	Voluntary Controlled	12
2322	Preston Primary School	Dover	Primary	Community	20
2312	River Primary School	Dover	Primary	Community	60
2627	Sandwich Junior School	Dover	Junior	Community	60
3175	Sibertswold CEP School	Dover	Primary	Voluntary Controlled	30
2532	St. Margaret's-at-Cliffe Primary School	Dover	Primary	Community	30
2471	Whitfield and Aspen School	Dover	Primary	Community	78
2326	Wingham Primary School	Dover	Primary	Community	30
3146	Bodsham CEP School	Folkestone & Hythe	Primary	Voluntary Controlled	13
3137	Brookland CEP School	Folkestone & Hythe	Primary	Voluntary Controlled	15
3904	Castle Hill Community Primary School	Folkestone & Hythe	Primary	Community	58
3902	Hythe Bay C of E Primary School	Folkestone & Hythe	Primary	Voluntary Controlled	<b>45</b>
3154	Lyminge CEP School	Folkestone & Hythe	Primary	Voluntary Controlled	30
3155	Lympne CEP School	Folkestone & Hythe	Primary	Voluntary Controlled	30
2524	Palmarsh Primary School	Folkestone & Hythe	Primary	Community	20
2545	Sandgate Primary School	Folkestone & Hythe	Primary	Community	60
3153	Seabrook CEP School	Folkestone & Hythe	Primary	Voluntary Controlled	15
2300	Sellindge Primary School	Folkestone & Hythe	Primary	Community	<b>30</b>
3160	Selsted CEP School	Folkestone & Hythe	Primary	Voluntary Controlled	15
3149	St. Martin's CEP School, Folkestone	Folkestone & Hythe	Primary	Voluntary Controlled	30
3150	St. Peter's CEP School, Folkestone	Folkestone & Hythe	Primary	Voluntary Controlled	15
3158	Stelling Minnis CEP School	Folkestone & Hythe	Primary	Voluntary Controlled	15
3159	Stowting CEP School	Folkestone & Hythe	Primary	Voluntary Controlled	15
2094	Cobham Primary School	Gravesham	Primary	Community	30
2109	Higham Primary School	Gravesham	Primary	Community	30
2674	Kings Farm Primary School	Gravesham	Primary	Community	52
2509	Singlewell Primary School	Gravesham	Primary	Community	60
2519	Vigo Village School	Gravesham	Primary	Community	30
2161	Boughton Monchelsea Primary School	Maidstone	Primary	Community	30
3061	Bredhurst CEP School	Maidstone	Primary	Voluntary Controlled	15
2171	Brunswick House Primary School	Maidstone	Primary	Community	60

2163	East Farleigh Primary School	Maidstone	Primary	Community	30
3898	Greenfields Community Primary School	Maidstone	Primary	Community	45
3067	Harrietsham CEP School	Maidstone	Primary	Voluntary Controlled	60
2165	Headcorn Primary School	Maidstone	Primary	Community	60
2166	Hollingbourne Primary School	Maidstone	Primary	Community	15
2578	Kingswood Primary School	Maidstone	Primary	Community	20
3091	Laddingford St. Mary's CEP School	Maidstone	Primary	Voluntary Controlled	13
3069	Leeds & Broomfield CEP School	Maidstone	Primary	Voluntary Controlled	15
2168	Lenham Primary School	Maidstone	Primary	Community	30
2520	Madginford Primary School	Maidstone	Primary	Community	90
2175	North Borough Junior School	Maidstone	Junior	Community	90
3906	Palace Wood Primary School	Maidstone	Primary	Community	60
2176	Park Way Primary School	Maidstone	Primary	Community	45
2169	Platts Heath Primary School	Maidstone	Primary	Community	13
2552	Sandling Primary School	Maidstone	Primary	Community	60
2586	Senacre Wood Primary School	Maidstone	Primary	Community	30
3090	St. Margaret's CEP School, Collier Street	Maidstone	Primary	Voluntary Controlled	17
3073	St. Michael's CEI School, Maidstone	Maidstone	Infant	Voluntary Controlled	40
3072	St. Michael's CEJ School, Maidstone	Maidstone	Junior	Voluntary Controlled	45
2474	St. Paul's Infant School	Maidstone	Infant	Community	90
2192	Staplehurst School	Maidstone	Primary	Community	75
2193	Sutton Valence Primary School	Maidstone	Primary	Community	30
3081	Thurnham CEI School	Maidstone	Infant	Voluntary Controlled	90
3083	Ulcombe CEP School	Maidstone	Primary	Voluntary Controlled	15
2653	West Borough Primary School	Maidstone	Primary	Community	60
3092	Yalding St. Peter & St. Paul CEP School	Maidstone	Primary	Voluntary Controlled	24
3055	Churchill CEP School	Sevenoaks	Primary	Voluntary Controlled	60
2088	Crockenhill Primary School	Sevenoaks	Primary	Community	30
3054	Crockham Hill CEP School	Sevenoaks	Primary	Voluntary Controlled	20
3896	Downsview Primary	Sevenoaks	Primary	Community	30
2130	Dunton Green Primary School	Sevenoaks	Primary	Community	30
3015	Fawkham CEP School	Sevenoaks	Primary	Voluntary Controlled	15
2134	Four Elms Primary School	Sevenoaks	Primary	Community	15
3907	Hextable Primary School	Sevenoaks	Primary	Community	90
2615	High Firs Primary School	Sevenoaks	Primary	Community	30
2136	Kemsing Primary School	Sevenoaks	Primary	Community	30
2137	Leigh Primary School	Sevenoaks	Primary	Community	23
2682	New Ash Green Primary School	Sevenoaks	Primary	Community	60
2138	Otford Primary School	Sevenoaks	Primary	Community	60
2459	Riverhead Infant School	Sevenoaks	Infant	Community	90

3035	Seal CEP School	Sevenoaks	Primary	Voluntary Controlled	60
2632	Sevenoaks Primary School	Sevenoaks	Primary	Community	90
2148	Shoreham Village School	Sevenoaks	Primary	Community	15
3298	St. Edmund's Church of England Primary School	Sevenoaks	Primary	Voluntary Controlled	<b>30</b>
3037	St. John's CEP School, Sevenoaks	Sevenoaks	Primary	Voluntary Controlled	30
3201	St. Lawrence CEP School	Sevenoaks	Primary	Voluntary Controlled	12
3010	St. Paul's CEP School	Sevenoaks	Primary	Voluntary Controlled	15
3043	Sundridge & Brasted CEP School	Sevenoaks	Primary	Voluntary Controlled	15
2147	Weald Community Primary School	Sevenoaks	Primary	Community	30
3282	Boughton-under-Blean & Dunkirk Primary School	Swale	Primary	Voluntary Controlled	30
2254	Canterbury Road Primary School	Swale	Primary	Community	30
2228	Davington Primary School	Swale	Primary	Community	60
2226	Eastling Primary School	Swale	Primary	Community	15
2227	Ethelbert Road Primary School	Swale	Primary	Community	30
3109	Hernhill CEP School	Swale	Primary	Voluntary Controlled	30
2231	Lower Halstow School	Swale	Primary	Community	30
3111	Newington CEP School	Swale	Primary	Voluntary Controlled	30
3108	Ospringe CEP School	Swale	Primary	Voluntary Controlled	30
2239	Rodmersham School	Swale	Primary	Community	10
2245	Rose Street School	Swale	Primary	Community	60
3117	Teynham Parochial CEP School	Swale	Primary	Voluntary Controlled	30
2434	West Minster Primary School	Swale	Primary	Community	90
3178	Birchington CEP School	Thanet	Primary	Voluntary Controlled	60
2329	Callis Grange Nursery & Infant School	Thanet	Infant	Community	90
2340	Ellington Infant School	Thanet	Infant	Community	60
3179	Holy Trinity & St. John's CEP School, Margate	Thanet	Primary	Voluntary Controlled	60
3182	Minster CEP School	Thanet	Primary	Voluntary Controlled	60
3183	Monkton CEP School	Thanet	Primary	Voluntary Controlled	15
3918	Newington Community Primary School and Nursery	Thanet	Primary	Community	90
2345	Priory Infant School	Thanet	Infant	Community	60
2337	St. Crispin's Community Primary Infant School	Thanet	Infant	Community	90
3186	St. Nicholas at Wade CEP School	Thanet	Primary	Voluntary Controlled	30
3181	St. Saviour's CEJ School	Thanet	Junior	Voluntary Controlled	96
2514	Brookfield Infant School	Tonbridge & Malling	Infant	Community	60
5223	Brookfield Junior School, Larkfield	Tonbridge & Malling	Junior	Community	64
3062	Burham CEP School	Tonbridge & Malling	Primary	Voluntary Controlled	28
2065	Discovery School	Tonbridge & Malling	Primary	Community	90
2164	East Peckham Primary School	Tonbridge & Malling	Primary	Community	30

2132	Hadlow School	Tonbridge & Malling	Primary	Community	30
3033	Hildenborough CEP School	Tonbridge & Malling	Primary	Voluntary Controlled	30
2167	Ightham Primary School	Tonbridge & Malling	Primary	Community	30
2680	Kings Hill School	Tonbridge & Malling	Primary	Community	60
2562	Lunsford Primary School	Tonbridge & Malling	Primary	Community	30
2185	Mereworth Community Primary School	Tonbridge & Malling	Primary	Community	30
2187	Offham Primary School	Tonbridge & Malling	Primary	Community	30
2188	Plaxtol Primary School	Tonbridge & Malling	Primary	Community	15
2189	Ryarsh Primary School	Tonbridge & Malling	Primary	Community	30
2190	Shipbourne School	Tonbridge & Malling	Primary	Community	9
2155	Slade Primary School	Tonbridge & Malling	Primary	Community	60
3089	St. George's CEP School	Tonbridge & Malling	Primary	Voluntary Controlled	30
3057	St. Peter's CEP School	Tonbridge & Malling	Primary	Voluntary Controlled	24
2539	Stocks Green Primary School	Tonbridge & Malling	Primary	Community	30
2156	Sussex Road Community Primary School	Tonbridge & Malling	Primary	Community	60
3082	Trottscliffe CEP School	Tonbridge & Malling	Primary	Voluntary Controlled	12
2530	Tunbury Primary School	Tonbridge & Malling	Primary	Community	90
2079	Woodlands Primary School	Tonbridge & Malling	Primary	Community	90
3088	Wouldham, All Saint's CEP School	Tonbridge & Malling	Primary	Voluntary Controlled	60
3022	Benenden CEP School	Tunbridge Wells	Primary	Voluntary Controlled	30
3023	Bidborough CEP School	Tunbridge Wells	Primary	Voluntary Controlled	30
2490	Bishops Down Primary School	Tunbridge Wells	Primary	Community	30
2651	Broadwater Primary School	Tunbridge Wells	Primary	Community	30
2128	Capel Primary School	Tunbridge Wells	Primary	Community	30
2465	Claremont Primary School	Tunbridge Wells	Primary	Community	60
3027	Cranbrook CEP School	Tunbridge Wells	Primary	Voluntary Controlled	30
3198	Frittenden CEP School	Tunbridge Wells	Primary	Voluntary Controlled	15
3029	Goudhurst & Kilndown CEP School	Tunbridge Wells	Primary	Voluntary Controlled	30
3032	Hawkhurst CEP School	Tunbridge Wells	Primary	Voluntary Controlled	30
3034	Lamberhurst St. Mary's CEP School	Tunbridge Wells	Primary	Voluntary Controlled	30
2482	Langton Green Primary School	Tunbridge Wells	Primary	Community	60
2139	Pembury School	Tunbridge Wells	Primary	Community	60
2142	Sandhurst Primary School	Tunbridge Wells	Primary	Community	30
3297	Southborough CEP School	Tunbridge Wells	Primary	Voluntary Controlled	90
3050	St. John's CEP School	Tunbridge Wells	Primary	Voluntary Controlled	90
3052	St. Mark's CEP School	Tunbridge Wells	Primary	Voluntary Controlled	60
3294	St. Matthew's High Brooms CEP School	Tunbridge Wells	Primary	Voluntary Controlled	60
3053	St. Peter's CEP School	Tunbridge Wells	Primary	Voluntary Controlled	30

\*\*\* Please note at time of going to consultation these schools are awaiting an academy order